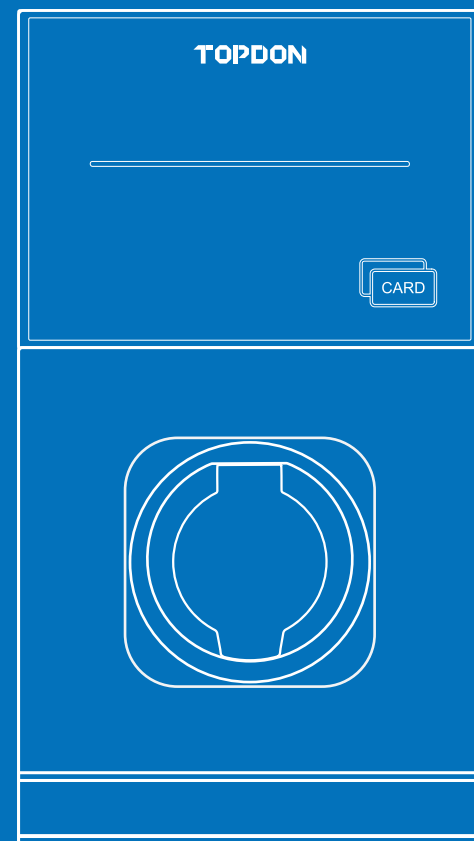


# TOPDON PulseQ AC Pro



## TOPDON TECHNOLOGY Co., Ltd.

TEL +1 833-629-4832 (North America) +86 755-21612590

Email support@topdon.com

Website www.topdon.com

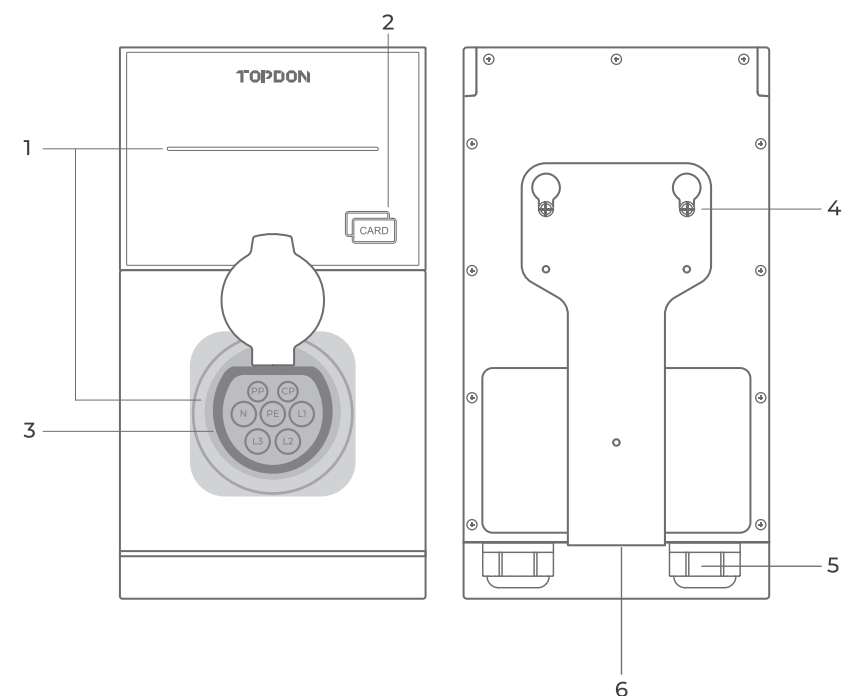
Facebook @TopdonOfficial

Twitter @TopdonOfficial



AC EV Charger  
Quick Start Guide

## Section 1 - Product Overview



### 1. Charging Status Indicator

Indicator Color	Indicator Status	Connotation
Green	ON	Standby
Blue	ON	Charging plug connected, ready to start charging / Charging complete (plug still connected)
	Pulsing	Charging in progress
Green & Red	Alternatively Blinking (1 green blink, 1~12 red blinks)	Fault (for more details, please refer to the user manual)

### 2. Card Read Area

### 3. Charging Socket

To connect the PulseQ AC Pro charger with the vehicle inlet socket, a Type 2 male to Type 2 female cable (not included) is needed.

### 4. Wall-Mounting Screws

### 5. Power Input Cable Mounting Hole

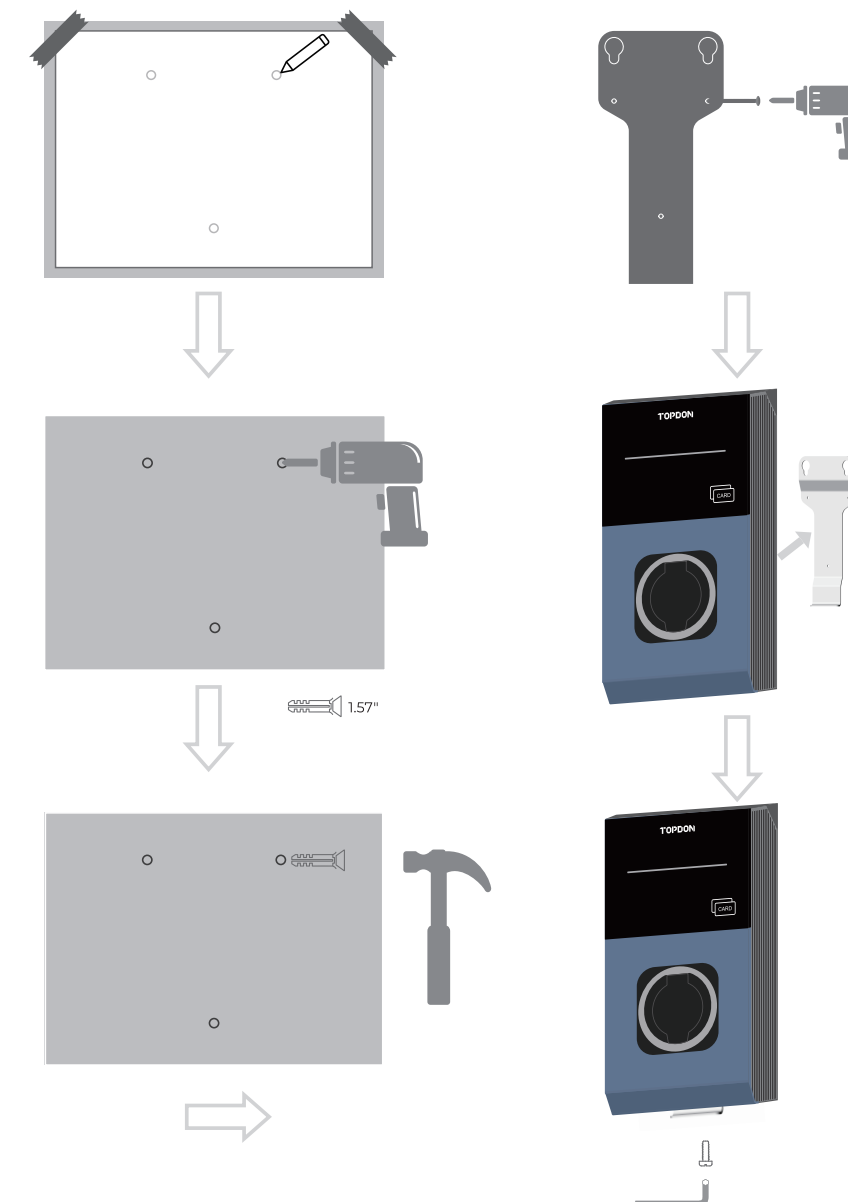
### 6. RJ45 Port

## Section 2 - Installation



When using the product, safety precautions should always be followed. Please read and make sure you fully understand all safety instructions before use. For details of instructions, please refer to the user manual.

### 2.1 Wall Bracket Installation



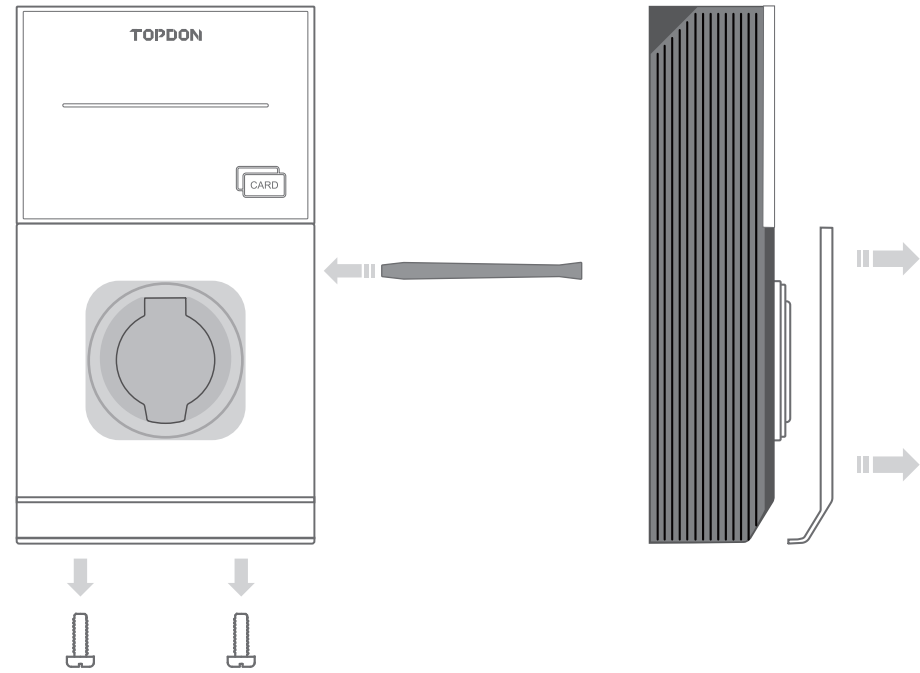
## 2.2 Hardwire Installation



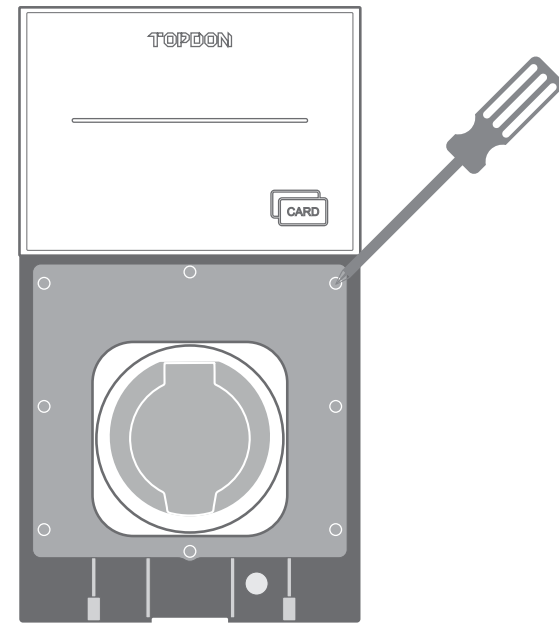
Hardwire installation needs to be done by professional electricians.

For details of installation, please refer to the user manual.

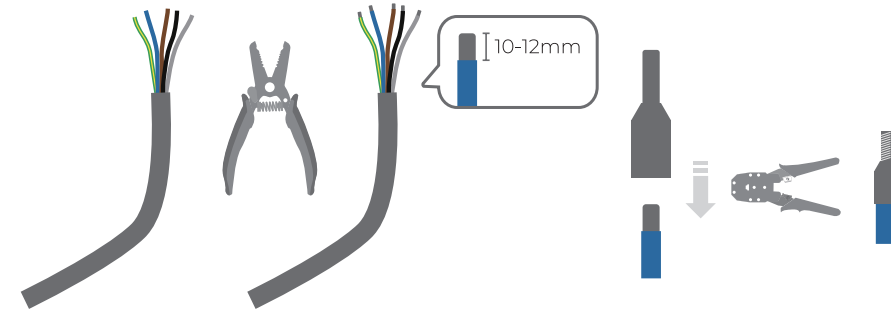
1. Unscrew the two screws on the bottom of the front cover, and use a spudger to remove the cover.



2. Unscrew the eight screws to open the inner cover.

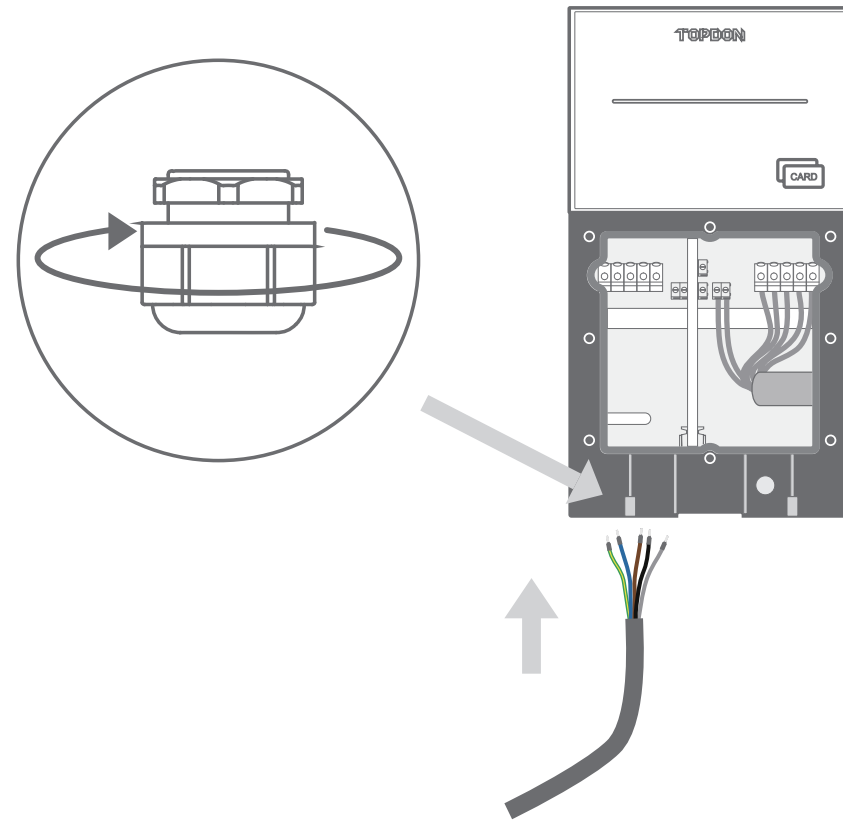


3. Use a wire stripper to remove 10~12 mm of insulation from the prepared power wires, and crimp the exposed wire conductors with the crimping pliers.



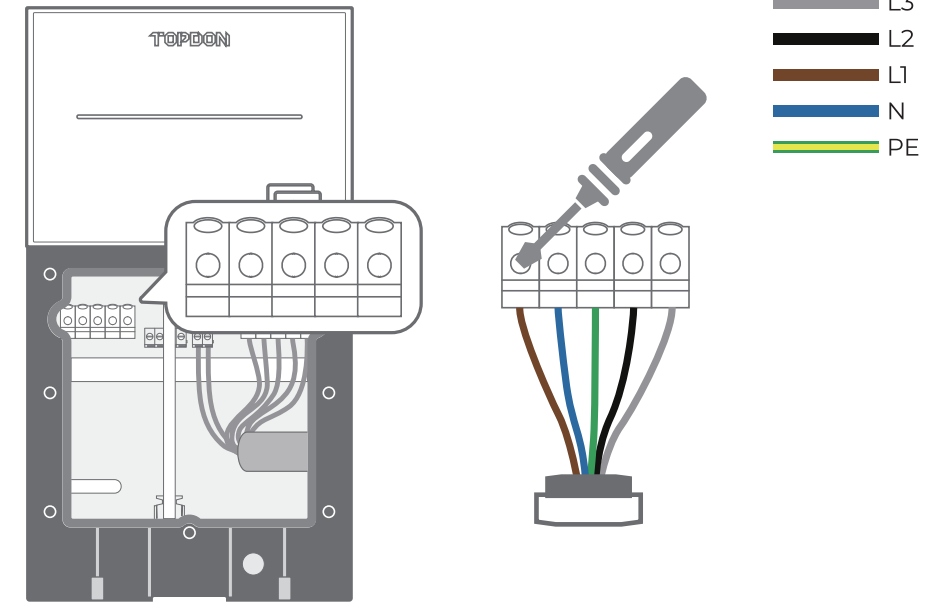
Note: Wire ferrules are needed (not included).

4. Remove the gland at the bottom right of the charger and pass the crimped power cable through the hole.



The supported diameter of outer cable sheath ranges from 17 to 22 mm. For chargers rated at 7kW / 22kW, the minimum size of each wire is 6mm<sup>2</sup>. For chargers rated at 11kW, the minimum size of each wire is 4mm<sup>2</sup>.

5. Loosen the five terminal screws and fully insert each wire connector into its correct terminal block. Use a torque screwdriver to tighten the terminal screws with a torque of 19.6 N.cm.



## Section 3 - How to Charge An EV?

The PulseQ AC Pro provides the following two charging modes:

**Plug and Play** - Charging starts once the charging plug is connected.

**RFID Reader mode** - Touch the supplied card on the charger to start / stop charging. You will hear a beep sound when charging starts / stops.



To toggle between the Plug and Play and RFID Reader modes, touch the supplied charging card on the charger for more than 5 seconds (until a beep sound is heard).