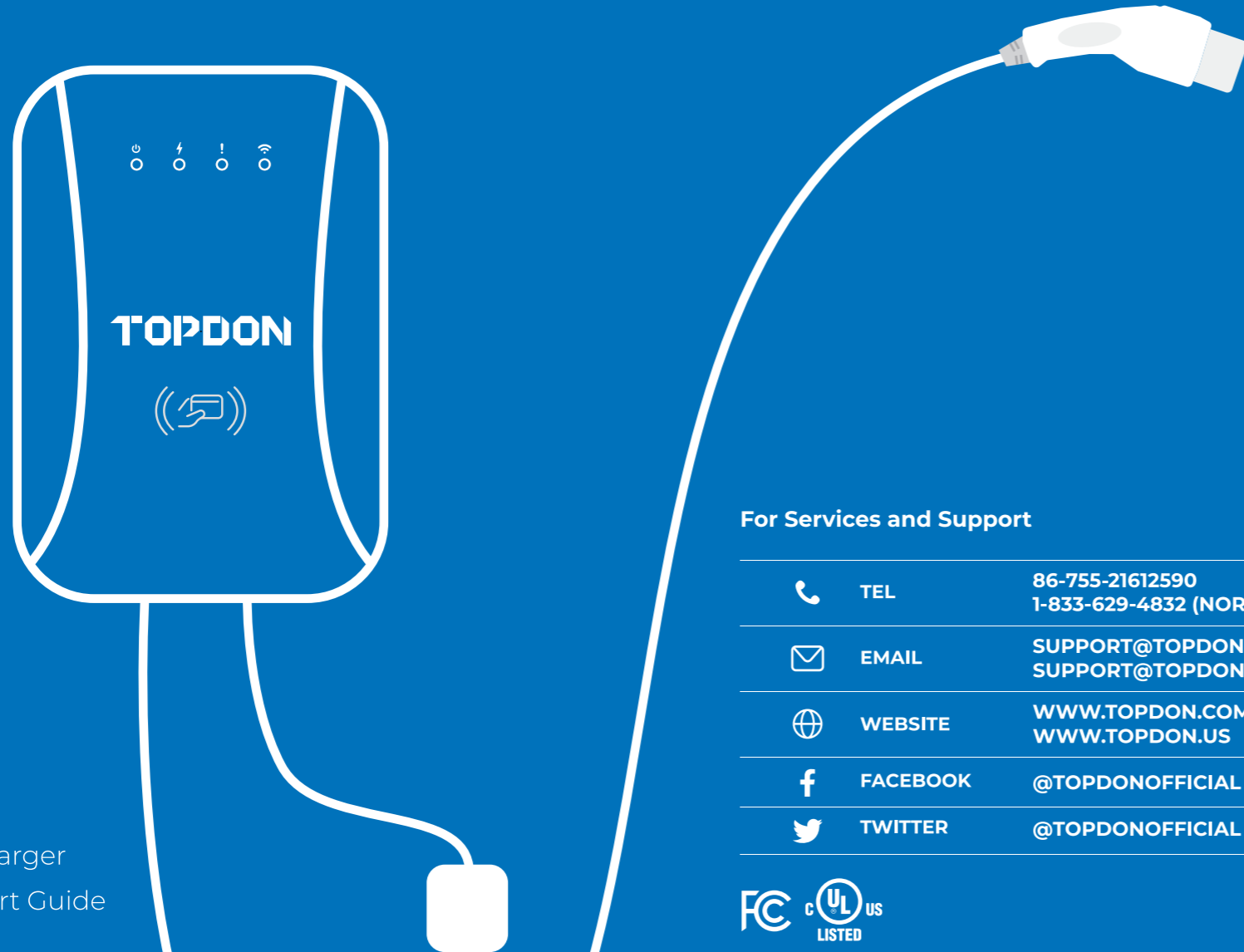


TOPDON

PulseQ

AC Home US Version



For Services and Support

TEL	86-755-21612590 1-833-629-4832 (NORTH AMERICA)
EMAIL	SUPPORT@TOPDON.COM SUPPORT@TOPDON.US
WEBSITE	WWW.TOPDON.COM WWW.TOPDON.US
FACEBOOK	@TOPDONOFFICIAL
TWITTER	@TOPDONOFFICIAL



AC EV Charger
Quick Start Guide

Section 1—Plug-In Installation

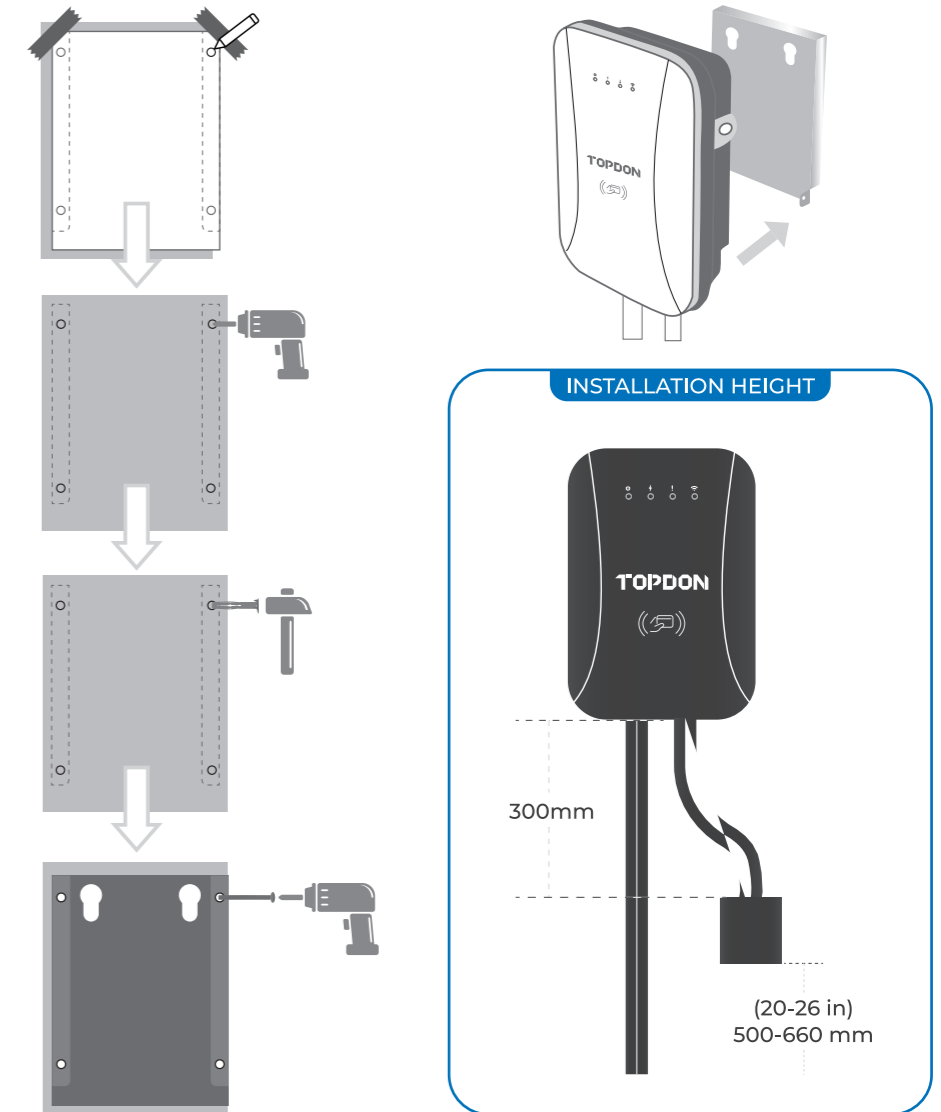
- Contact a professional electrician with any installation questions.
- Please strictly follow the installation steps and warnings on the User Manual.
- For hardwire installation, please refer to the User Manual.
- Make sure the wall socket is NEMA 14-50 (See Fig. 1.1)



Fig. 1.1





Please follow the instructions below to finish the installation.

The installation steps for the charging dock and the charging station are the same. Refer to the user manual.



Note: To activate/deactivate the Plug and Play charging mode, touch the supplied charging card on the charger for 10 seconds (until a beep sound is heard).

Section 2—LED Indicators

No.	Icon	Indicator Color	Indicator Status	Connotation
1		Green	ON	Standby status
			Twinkle	Ground fault status
2		Green	ON	Connected to an EV
			BLN control	Charging status
3		Red	Twinkle	Fault status
				Twinkle frequency indicates the fault code
4		Blue	OFF	Unconnected network
			ON	Connected to the network
			ON	Exchanging data with CMS via network.
			Twinkle	Configure WiFi network status

Section 3—Wi-Fi Configuration

- For ethernet configuration steps, please refer to the user manual.
- The PulseQ application is compatible with both Android and iOS.

1. To configure the Wi-Fi, please download the PulseQ application from the APP Store or Google Play and install the app to your phone. (See Fig. 3.1)



Fig. 3.1

- Register an account with your email address and login. (See Fig. 3.2)
- Open the app and tap the User Center, select Charging Station Management. (See Fig. 3.3)

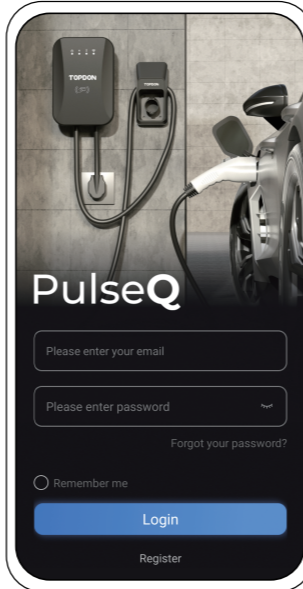


Fig. 3.2

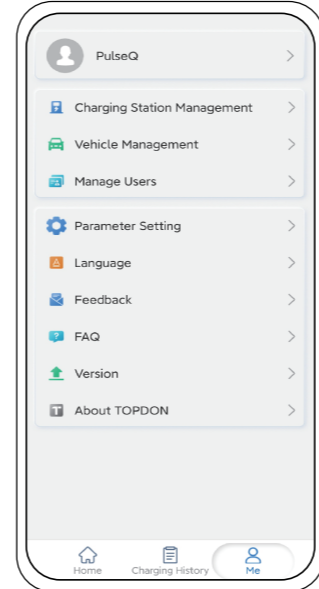


Fig. 3.3

- Tap the cross at the bottom right to add your charging station. (See Fig. 3.4)
- Select the Wi-Fi network. (See Fig. 3.5)

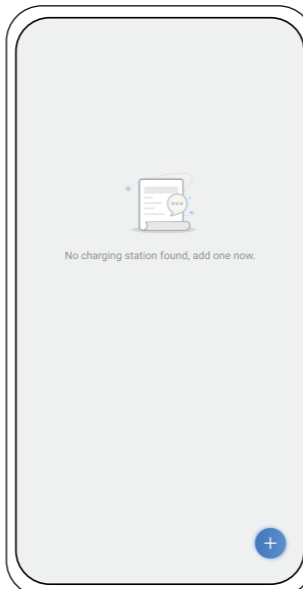


Fig. 3.4

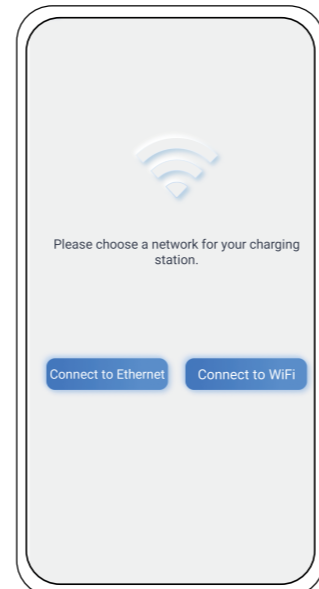


Fig. 3.5

- Scan the QR code as prompted to bind the charging station. (See Fig. 3.6)
- Enter the Wi-Fi name and password to setup the connection. (See Fig. 3.7)

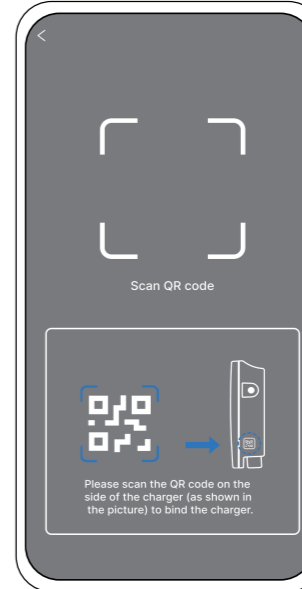


Fig. 3.6

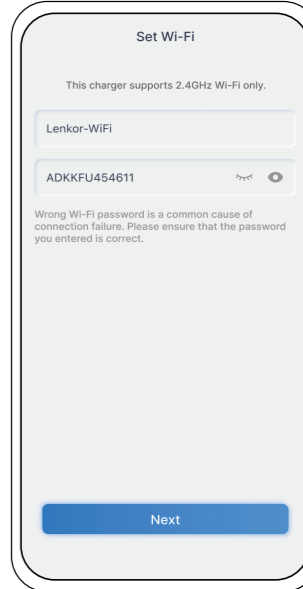


Fig. 3.7

- Ensure that the TOPDON-AC-Home can be detected in your available Wi-Fi list, and tap Hotspot Available, Connect. (See Fig. 3.8)
- After successful connection, you can rename your charging station. (See Fig.3.9)

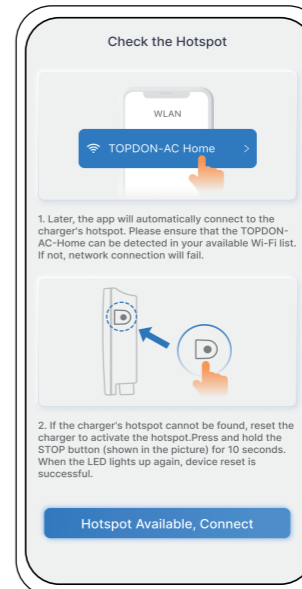


Fig. 3.8

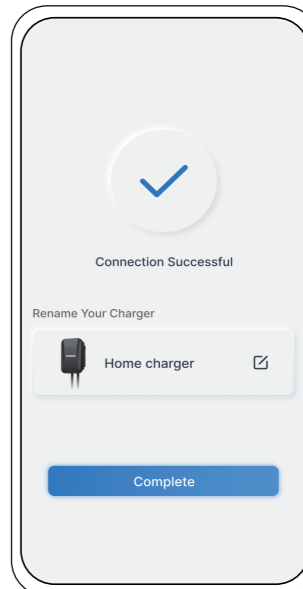


Fig. 3.9