

TOPDON

# PulseQ

AC Home EU Version



## For Services and Support

	TEL	86-755-21612590
	EMAIL	SUPPORT@TOPDON.COM
	WEBSITE	WWW.TOPDON.COM
	FACEBOOK	@TOPDONOFFICIAL
	TWITTER	@TOPDONOFFICIAL



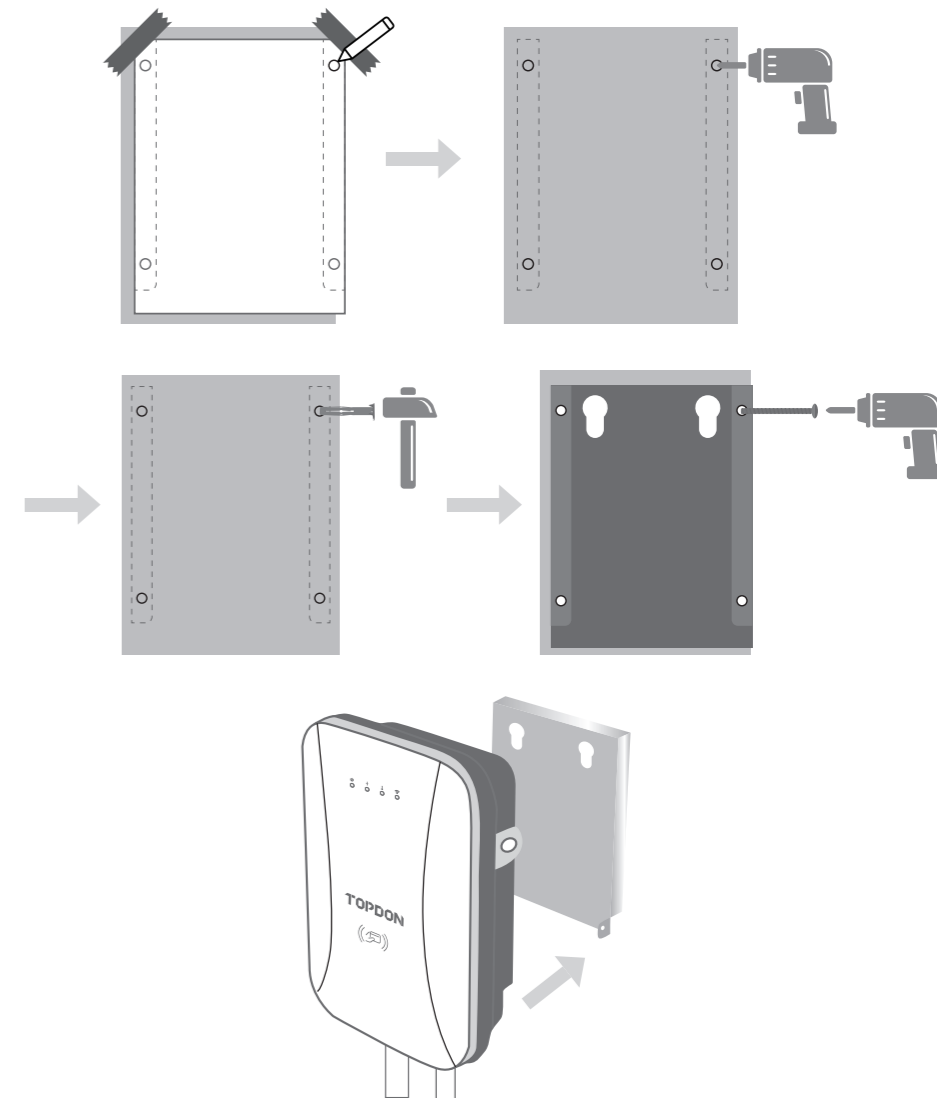
AC EV Charger  
Quick User Guide

## Section 1—Hardwire Installation

- Get yourself an professional electrician to install the PulseQ for you.
- Please strickly follow the installation steps and warnings on the User Manual.





### **Please follow the instructions below to finish the installation.**

The installation steps of the charging dock is the same as the steps of installing the charging station, or you can refer to the user manual.



**Note:** To activate/deactivate the Plug and Play charging mode, touch the supplied charging card on the charger for 10 seconds (until a beep sound is heard).

## Section 2—LED Indicators

No.	Icon	Indicator Color	Indicator Status	Connotation
1		Green	ON	Standby status
			Twinkle	Ground fault status
2		Green	ON	Connected to an EV
			BLN control	Charging status
3		Red	Twinkle	Fault status Twinkle frequency indicates the fault code
4		Blue	OFF	Unconnected network
			ON	Connected to the network
			ON	Exchange data with CMS via network.
			Twinkle	Configure WiFi network status

## Section 3—Wi-Fi Configuration

▫ The PulseQ application is compatible with both Android and iOS.

1. To configure the Wi-Fi, please download the PulseQ application from the APP Store and Google Play and install the app to your phone. (See Fig. 3.1)



Fig. 3.1

2. Register an account with your email address and login.(See Fig. 3.2)
3. Open the app and tap the User Center, select the charging station management. (See Fig. 3.3)

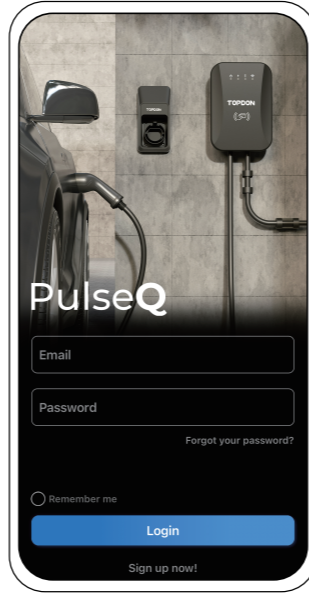


Fig. 3.2

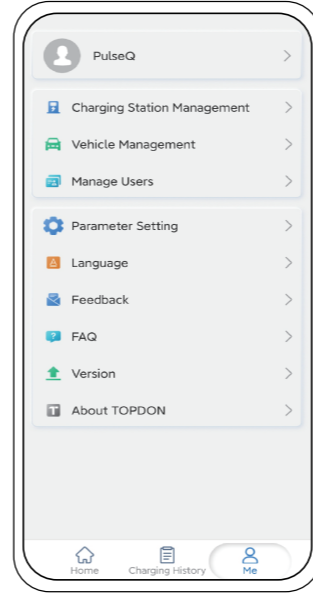


Fig. 3.3

4. Tap the cross at the bottom right to add your charging station. (See Fig. 3.4)
5. Select the Wi-Fi network. (See Fig. 3.5)

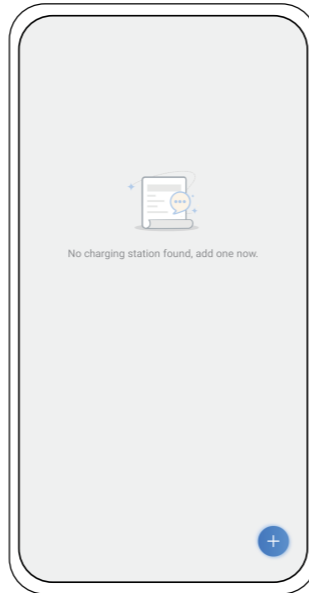


Fig. 3.4

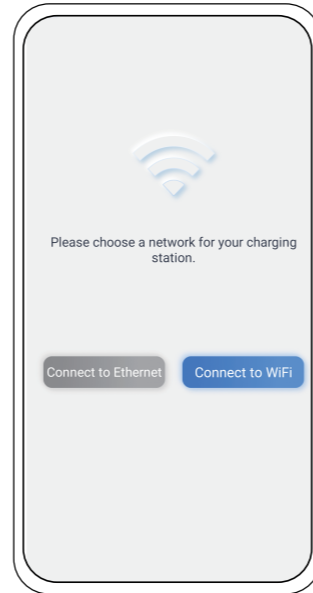


Fig. 3.5

6. Scan the QR code as prompted to bind the charging station. (See Fig. 3.6)
7. Enter the Wi-Fi name and password to setup the connection. (See Fig. 3.7)

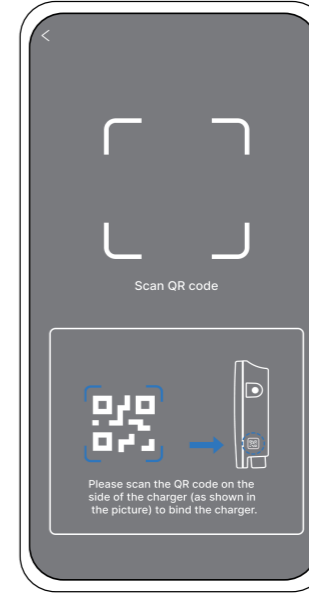


Fig. 3.6

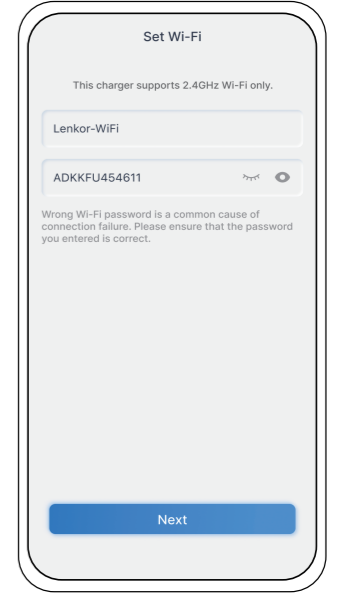


Fig. 3.7

8. Ensure that the TOPDON-AC-Home can be detected in your available Wi-Fi list, and tap Hotspot Available, Connect. (See Fig. 3.8)
9. After successful connection, you can rename your charging station. (See Fig.3.9)

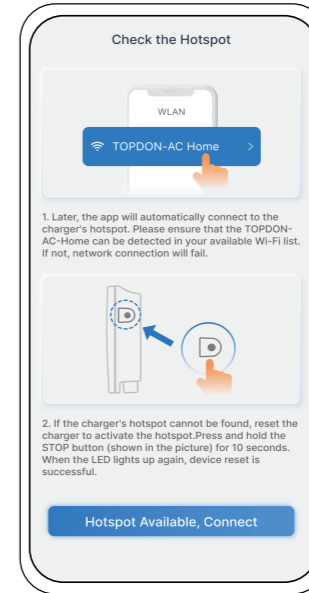


Fig. 3.8

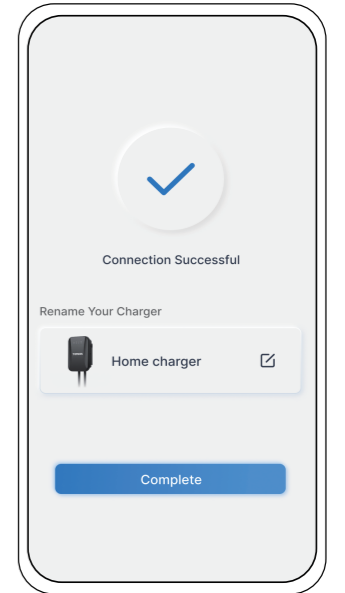


Fig. 3.9